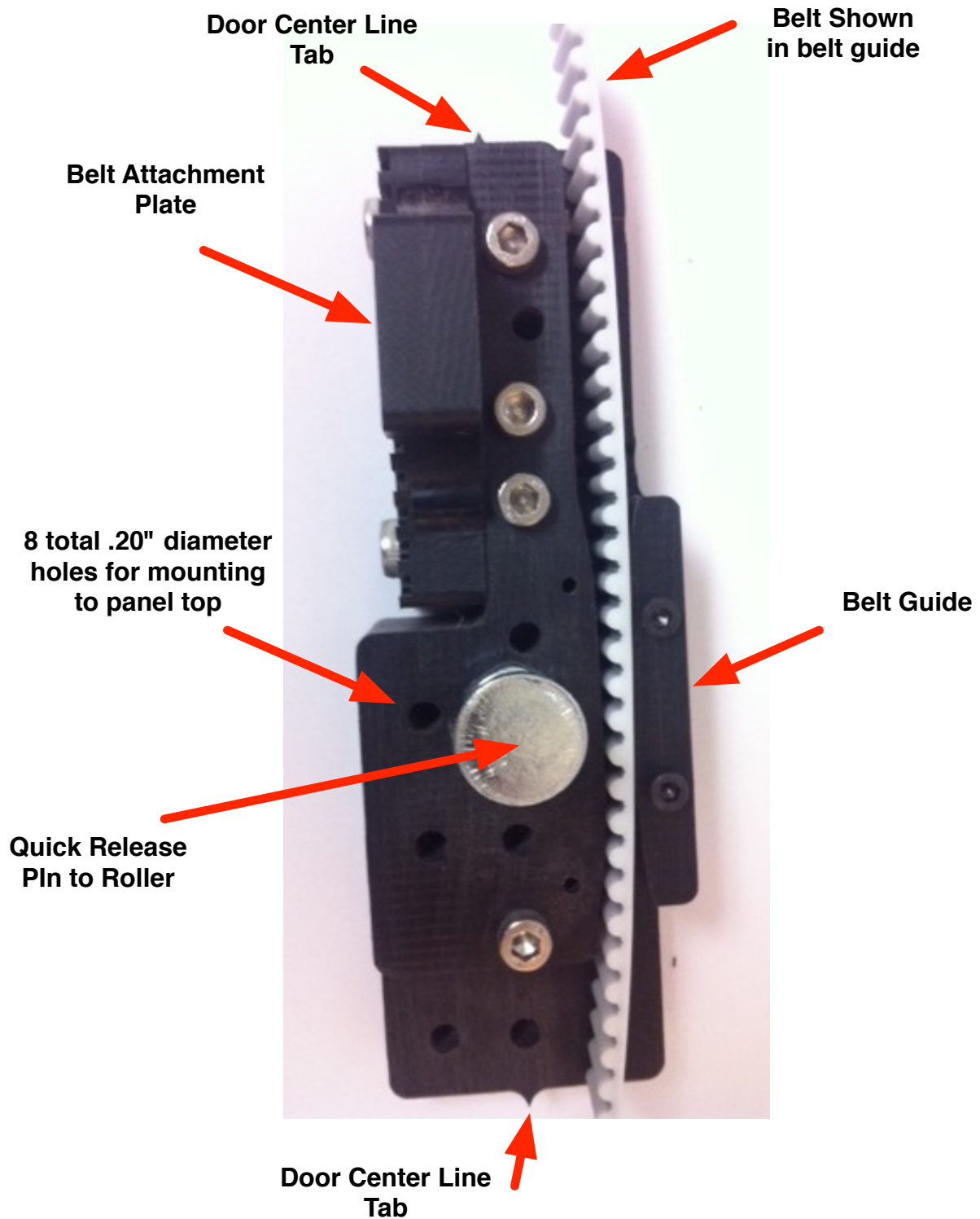
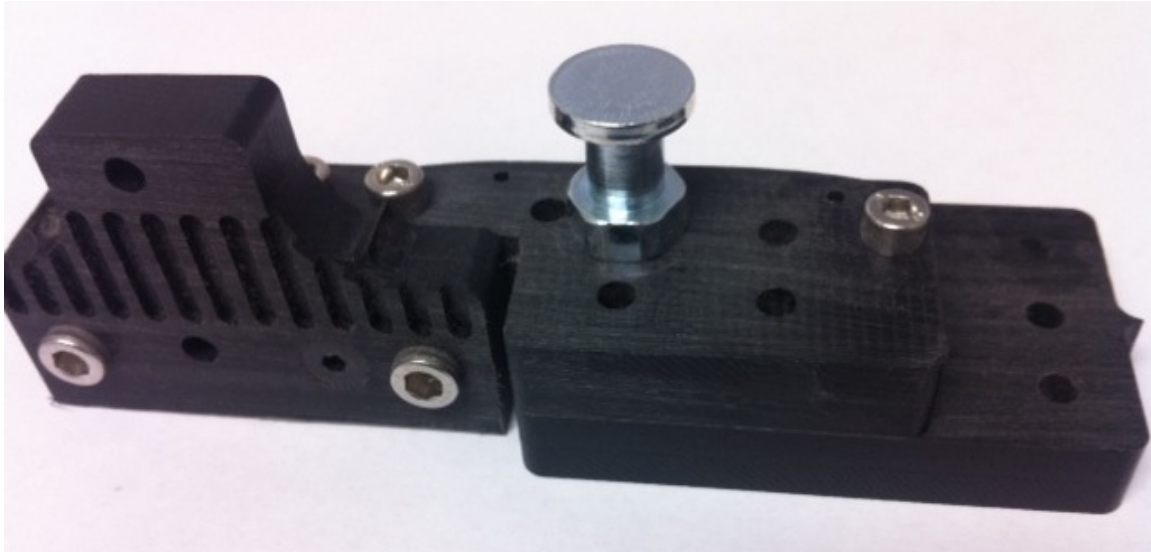


**Dado Door
Wood Clamp Info Version 3.00
(New design 3/4/2013)**



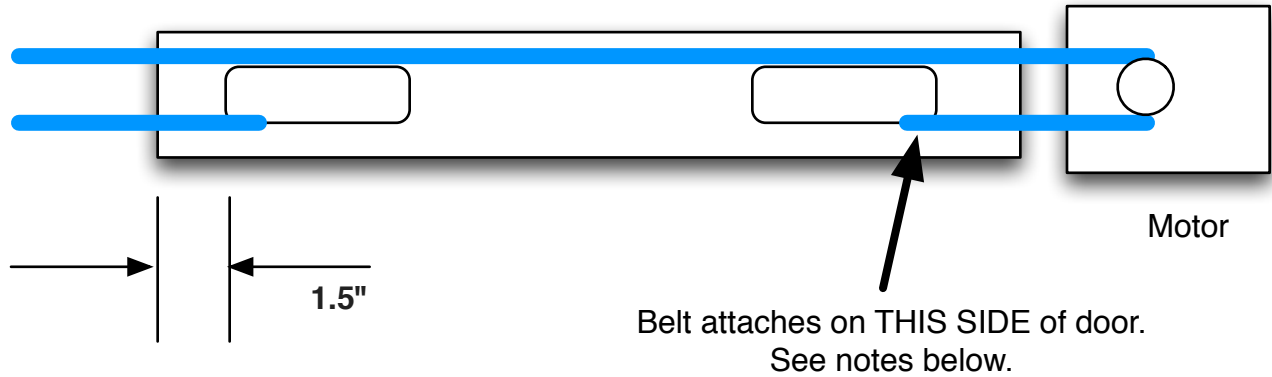


**Belt Attachment
Plate**

**Quick
Release
Tab**

**An additional part referred to as the Belt Lock Tab(not shown) is used
to secure the belt
to the Belt Attachment Plate**

Door Example Top View



**Clamp Should Mount no more than
1.5" From Door Edge Maximum unless
otherwise specified as a custom design.**

NOTE: Belt shown in BLUE, notice that the typical configuration is for the motor to sit inside the pocket, and the belt attaches in the manner shown.

For a DUAL DOOR design, the belt still should attach as shown on the door nearest the motor.