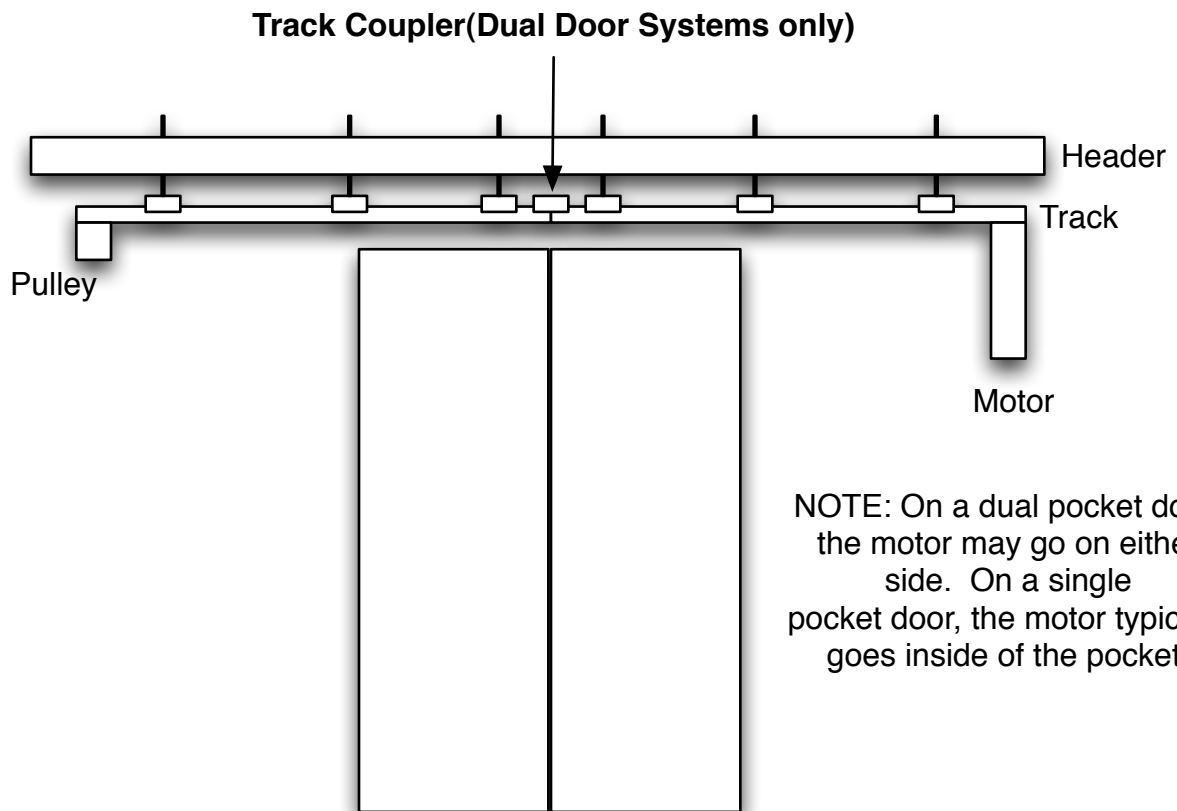
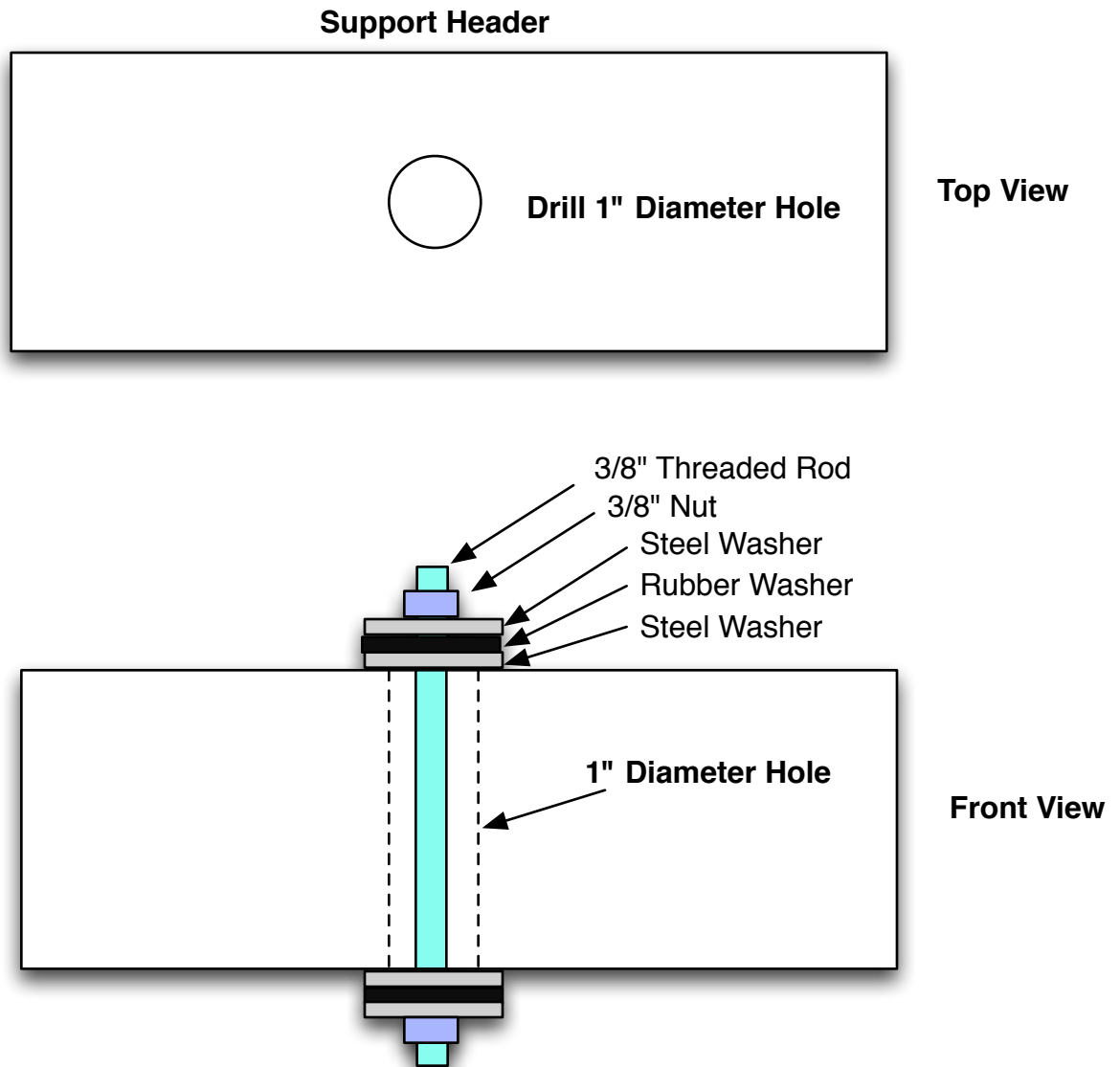


Dado Door Basic Track Setup Instructions

1. Assemble the track on the floor, slide the rollers onto the track before attaching motor/pulley. Insure that the white plastic quick release tabs are facing each other(towards the inside of door).
2. If the track is for a dual door and the track arrives in two pieces, connect the track using the track coupler part. Be sure the track is installed as straight as possible on the header.
3. If the track arrives in two pieces, the longer of the two tracks will be on the motor side. (Also, the longer belt will go to the motor side)
4. Once the track is assembled on the floor, spread out the hanger brackets and threaded rods evenly. A typical example of a dual door track is shown below.
5. Mark the drill locations for the threaded rod on the support header, drill 1" diameter holes for the rods to go through.
6. Attach the track to the support header by inserting the threaded rods through the 1" holes.
7. Place the washer set on the top of the support header onto the rods, then add the 3/8" nuts.
8. Leave the track hanging loosely until the door is attached.
9. Attach clamps to the door using either the wood or glass clamps.
10. Insure that the belt lock tabs are on the correct side of the door when mounting the clamps. See belt attachment info.
11. Position door under the track.
12. Attach clamps to the rollers using the quick release tabs on the rollers.
13. Raise the door off of the ground using the nuts on the top side of the threaded rod.
14. Adjust the nuts until the door is plumb in all positions(open/closed), and set the door height off the finished floor(for installations where the door is above the floor)



Attaching Track To Support Header

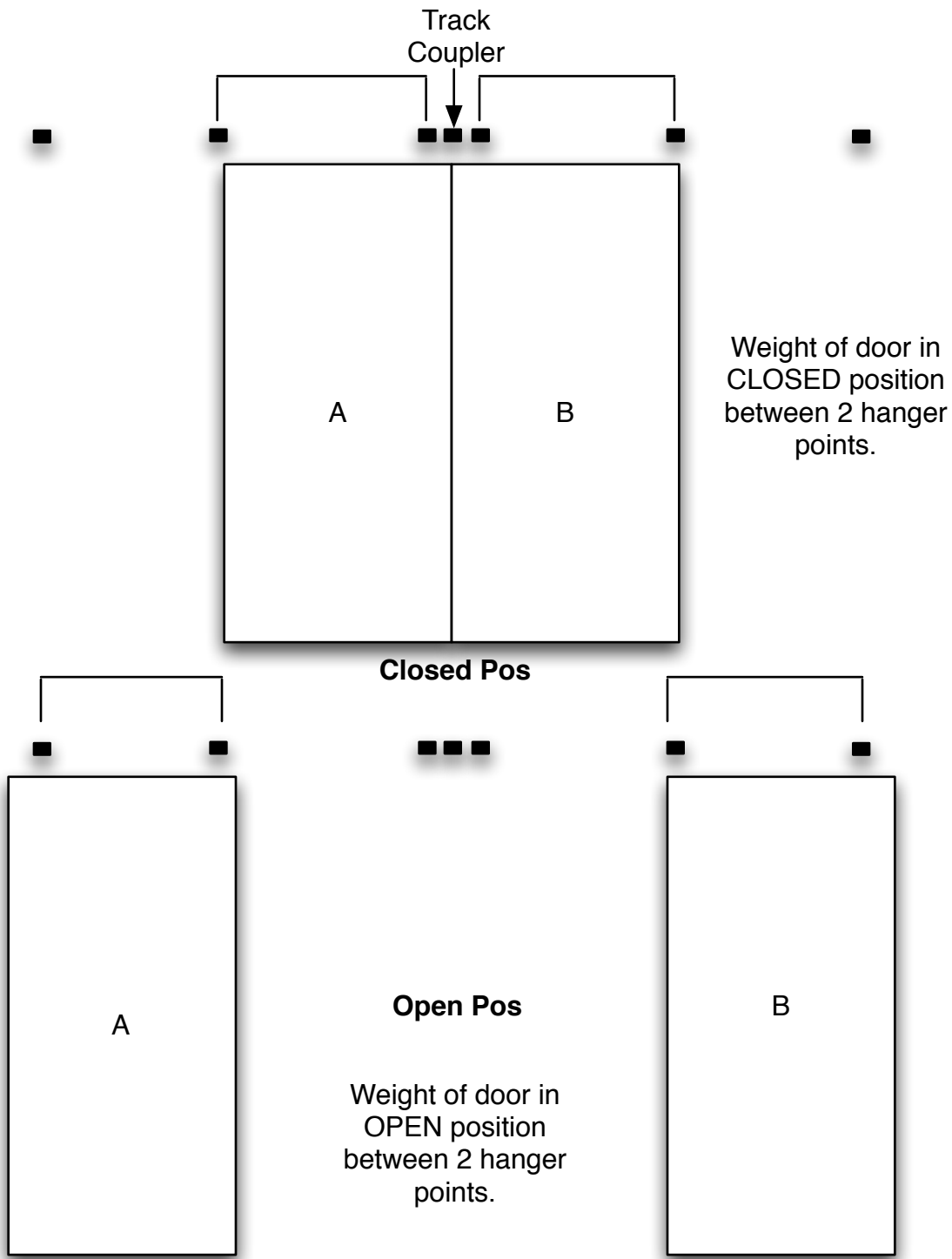


The combination of steel/rubber/steel washers is used to reduce vibration transfer from the track to the support header.

The threaded rod should not touch the 1" diameter hole in the support header, this helps reduce vibration transfer.

With the nuts on the lower side of the header at their lowest point, adjust the door height off floor, and alignment of door to floor/jamb with the nuts on top of the header. Once the door is plumb in all positions, lock the threaded rod in place with the nuts on the lower side. There are no lock washers included. Typically there is no need for locking nuts, however the installer may use thread locking compound(ie LokTite) if desired.

Calibrating the Dual Door



Belt Attachment Note:

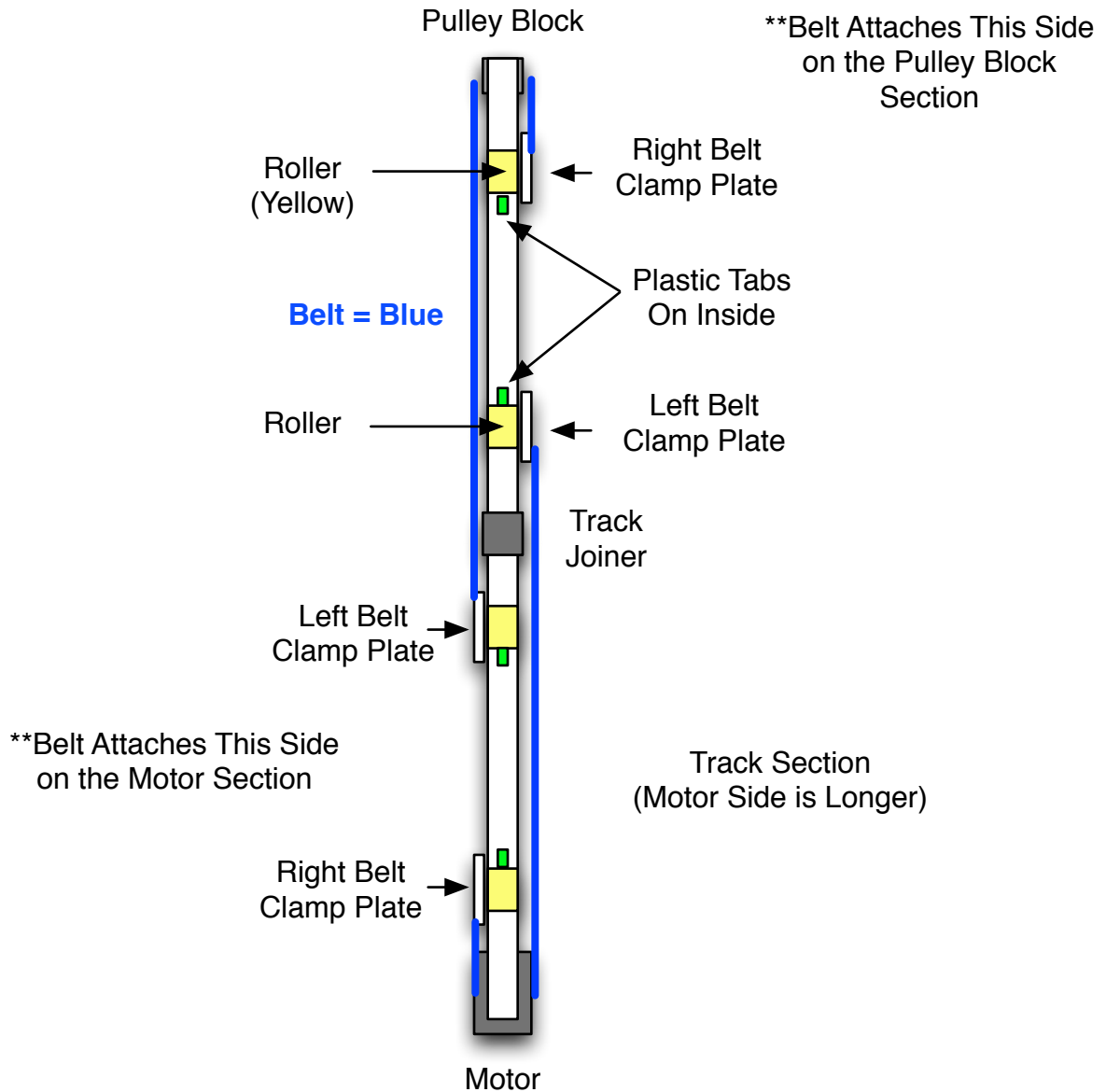
Prior to attaching belt, mark the center position of the doors on the floor. Hold the doors together at the marked center point. Tension the belt evenly on both sides so that doors are still centered.

Adjustments Note:

Place door in closed position, calibrate hangers so the doors are:
1. Off the floor at the basic desired distance 2. meeting together flush.
Then move doors to open position, calibrate so that door edges are aligned with jamb framing.

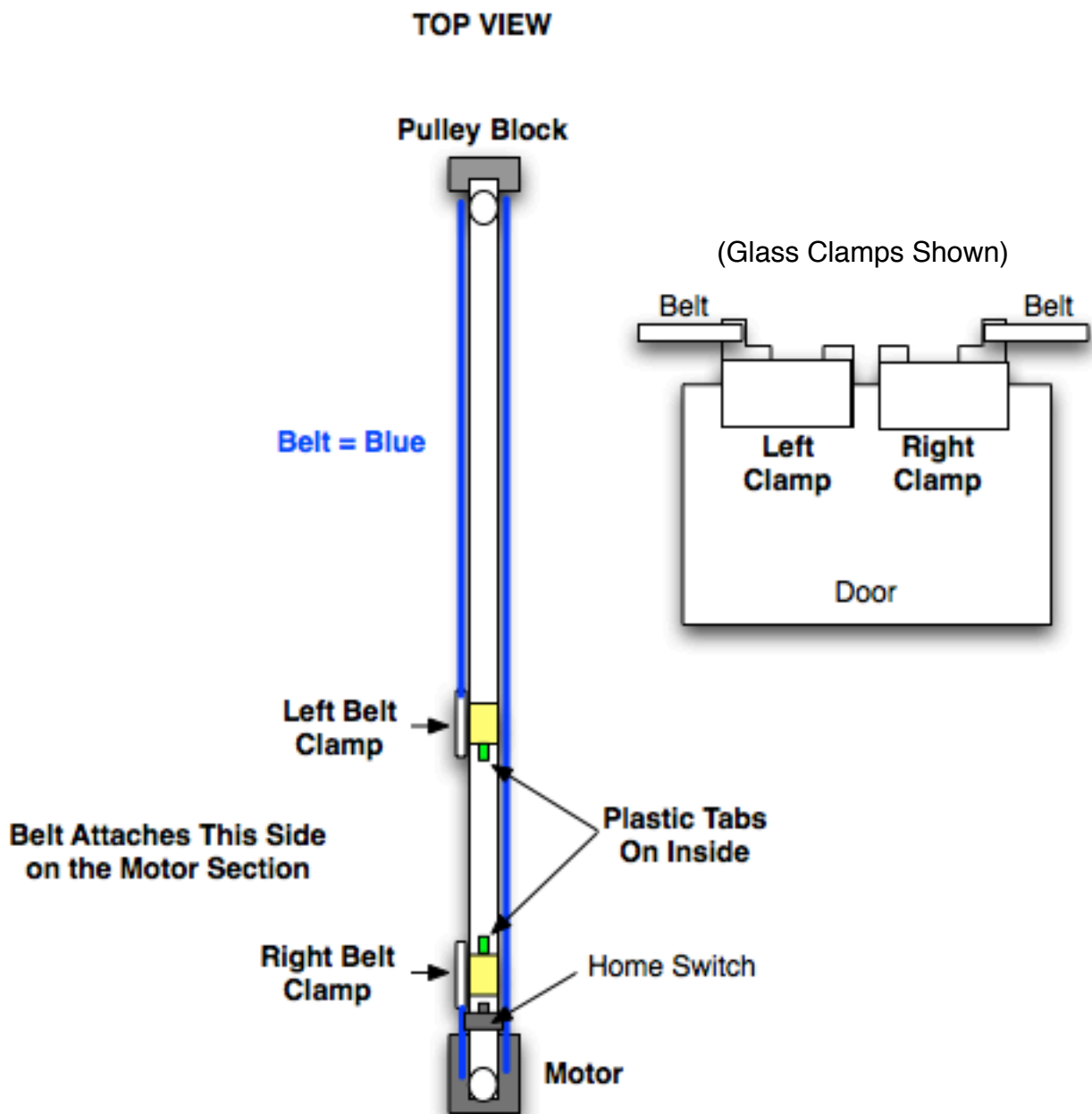
Dado Dual Track System Setup

TOP VIEW



IMPORTANT NOTE: For a dual door system, it may be practical to send the aluminum tracks in two sections. The tracks are then attached using the Track Joiner. If your system contains two track sections, one track section will be longer than the other. The longer track section **MUST** be on the motor side. As well, there will be two belt pieces. The longer belt piece will be used on the motor side.

Dado Single Track System Setup Overview



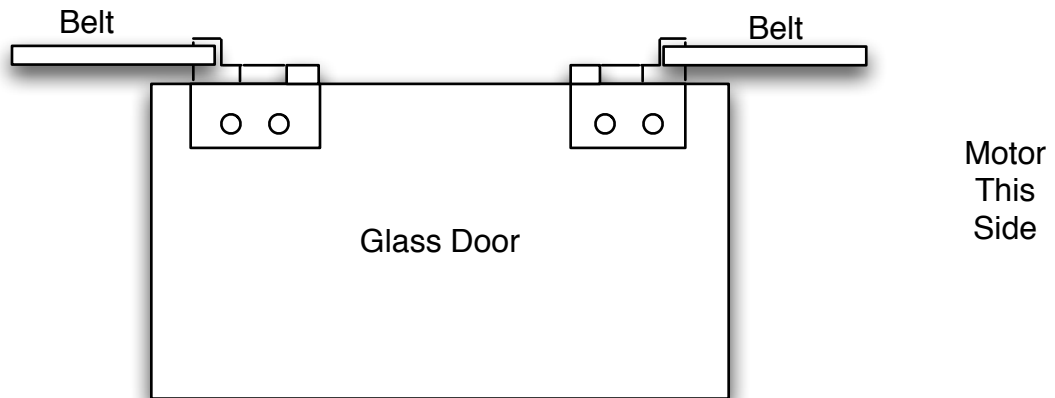
Standard Configuration Shown.

Damage can result to the door, electronics, and hardware if system is not installed as shown.

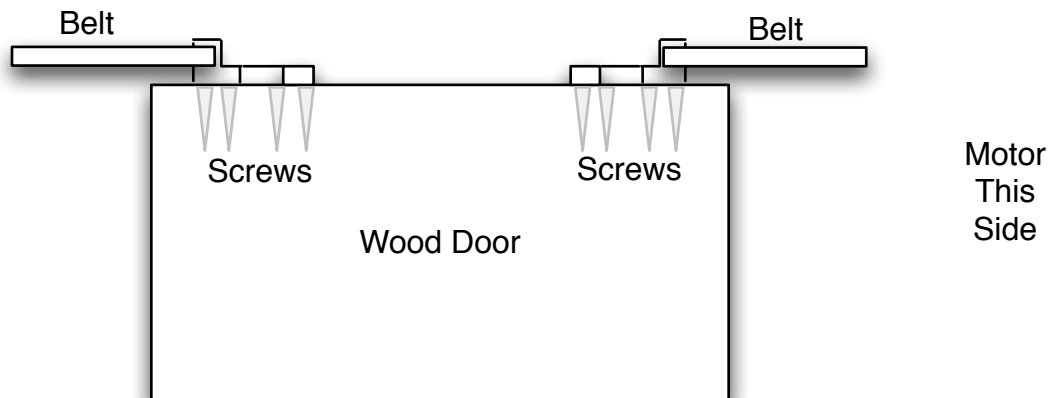
Do not use any other configuration without consulting Dado Door.

Glass Clamps attach over the top edge of the glass.
The glass is predrilled with 1" holes(see Glass
Drill Template).

The glass clamps attach to the glass with two 1.25" allen bolts through the glass. A plastic "glass insert' grommet is supplied that will be placed inside the holes in the glass.



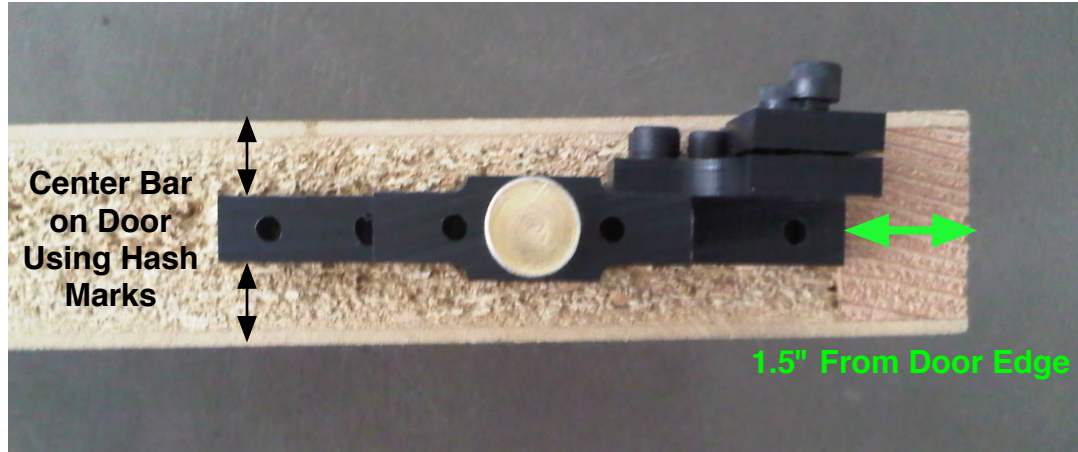
Wood Clamps attach to the top edge of the wood door using (client supplied)
screws approximately 4" long.



Dado Wood Door Mounts

IMPORTANT NOTES:

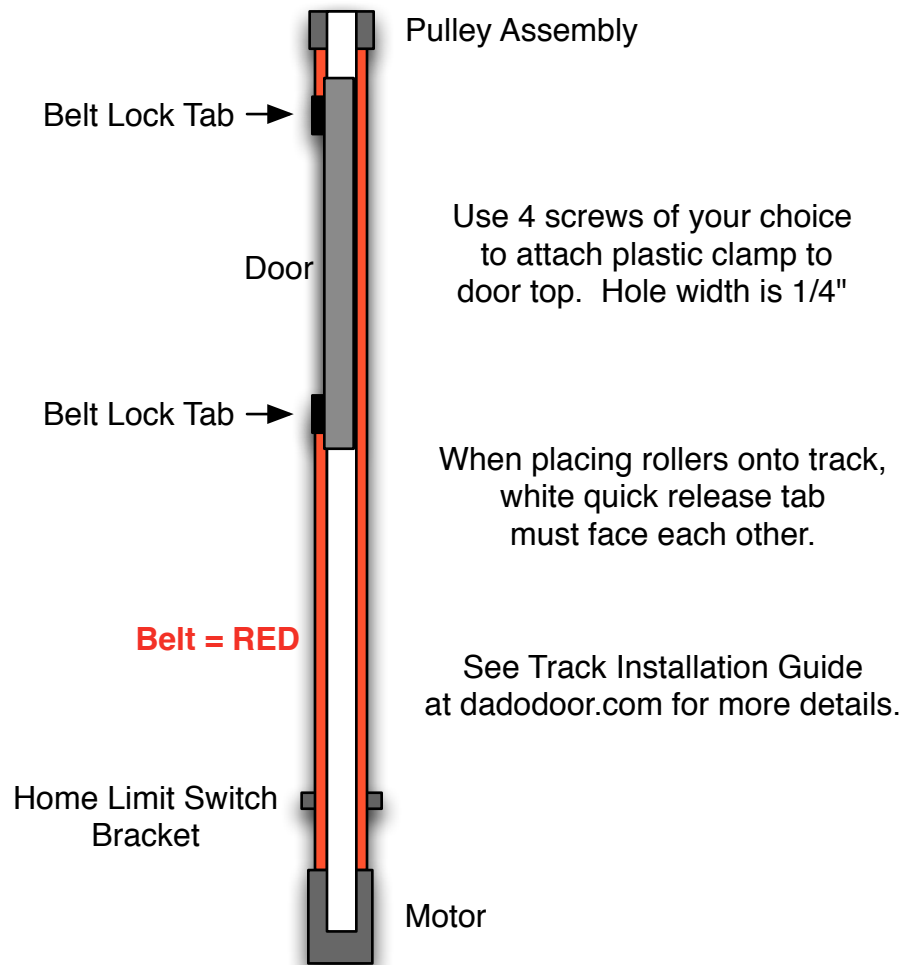
Insure that the hash marks are dead center of the door panel.
 The end of main clamp section must be 1.5" from the door edge.
 Only attach wood clamps to solid hardwood.



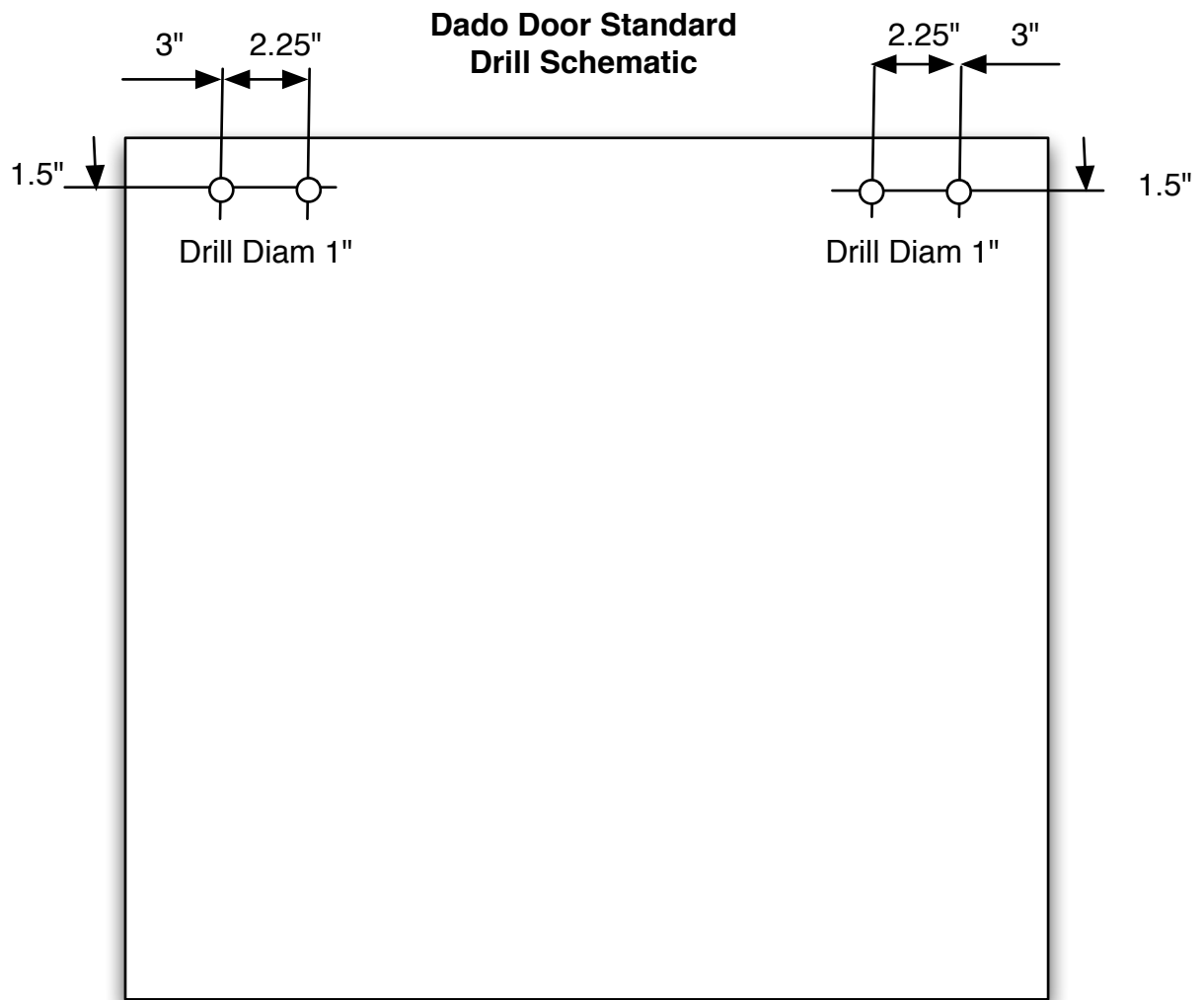
IMPORTANT: the Belt Lock Tabs MUST be on side as shown for SINGLE door use.

For DUAL door, the door panel closest to the motor will have the belt locks on the side shown in the diagram. The door panel opposite the motor will have belt locks on the opposite side of the track.

For dual track setup, see the Dado Dual Track System Setup diagram for more details.



TRACK TOP VIEW



Glass panels should be precision drilled by the fabricator.

Panels should be tempered.